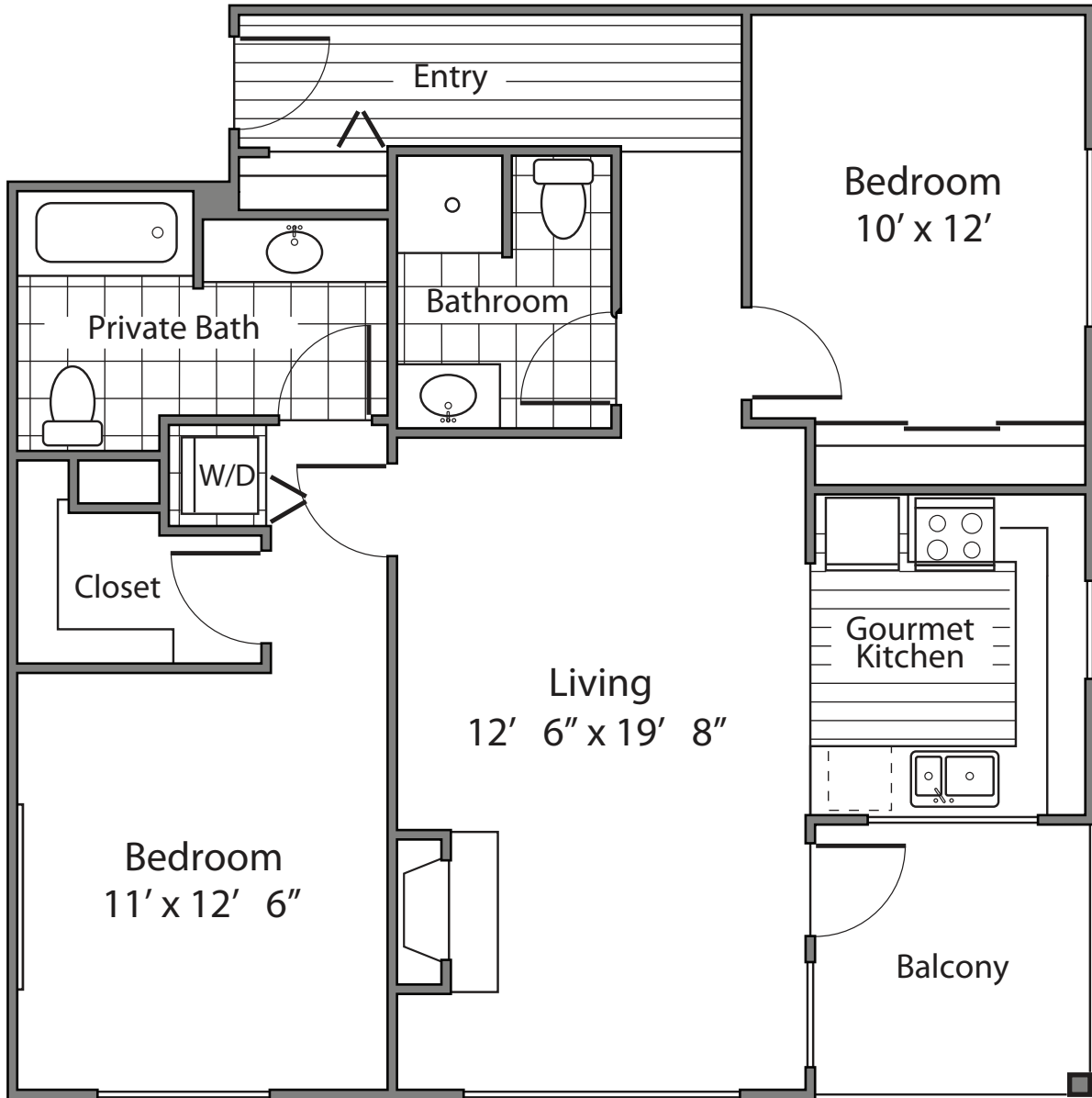




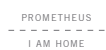
# 10th At Hoyt Apartments

PIETRA | APPROX 1,013 SQFT

925 N.W. HOYT STREET / PORTLAND, OR 97209 / V: 503-222-6841 / ✉ 10THATHOYT@PROMETHEUSREG.COM  
WWW.10ATHOYT.COM



We reserve the right to modify plans, features and specifications without notice of obligation. Measurements and square footage are approximate and should not be relied upon. Each floorplan is an artist's conception and is not to scale.



06/11

